

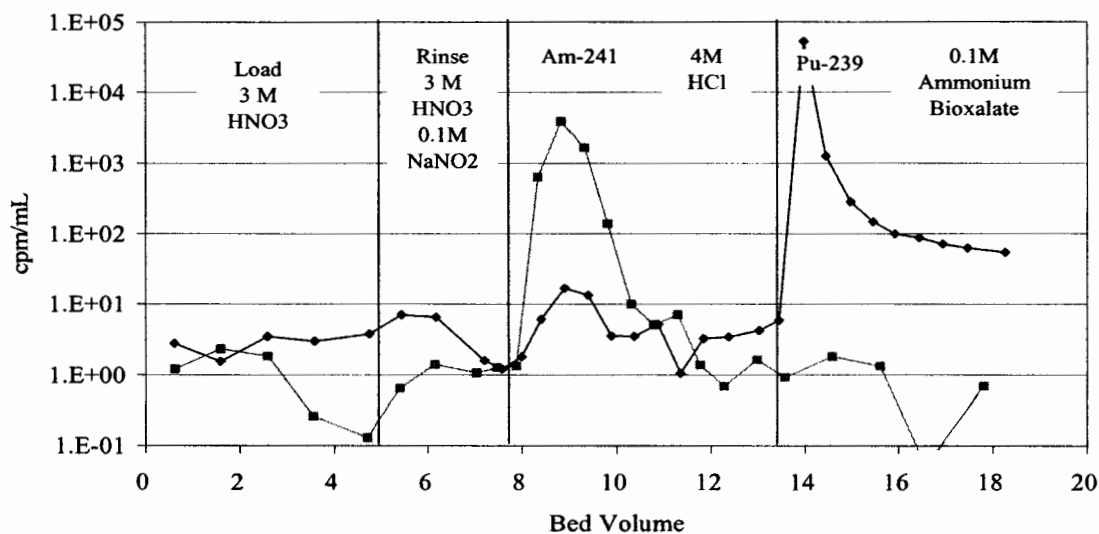
Product: Eichrom's TRU Resin  
 Lot #: TRA02036

Eichrom's TRU Resin Lot # TRA02036 has been manufactured according to Eichrom's standard operating procedures. This lot has been tested in accordance with Eichrom's quality assurance policy and procedures. This lot of product meets all Eichrom quality specifications.

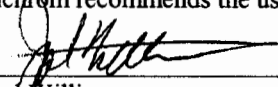
**ANALYSIS RESULTS**

<u>Test Value</u>	<u>Specification</u>	<u>Result</u>
Appearance	White beads	Pass
Distribution Ratio, Eu in 3.1 N nitric acid	≥ 60	88
% <sup>241</sup> Am stripped in 4M HCl		
Least acceptable mean (5 rep)	95.0	99.4
Max. standard deviation	2.5	0.0
% <sup>241</sup> Am stripped in 0.1M ammonium bioxalate		
Maximum acceptable mean (5 rep)	1.0	0.3
Max. standard deviation	0.5	0.1
% <sup>239</sup> Pu stripped in 0.1M ammonium bioxalate		
Least acceptable mean (5 rep)	95.0	97.8
Max. standard deviation	2.5	0.5
% <sup>239</sup> Pu stripped in 4M HCl		
Maximum acceptable mean (5 rep)	1.0	0.1
Max. standard deviation	0.5	0.0
Extractant distribution ratio, <sup>241</sup> Am strip in 0.05M HNO <sub>3</sub>	<0.50	0.31
Raw support resin gravity flow rate, mL/min	0.60-0.80	0.65

TRU Resin Elution Curve



Eichrom recommends the use of gravity flow with 100-150µm beads, "A" grade.

  
 Joel Williamson  
 Senior Quality Control Chemist

Prepared: February 27, 2006