

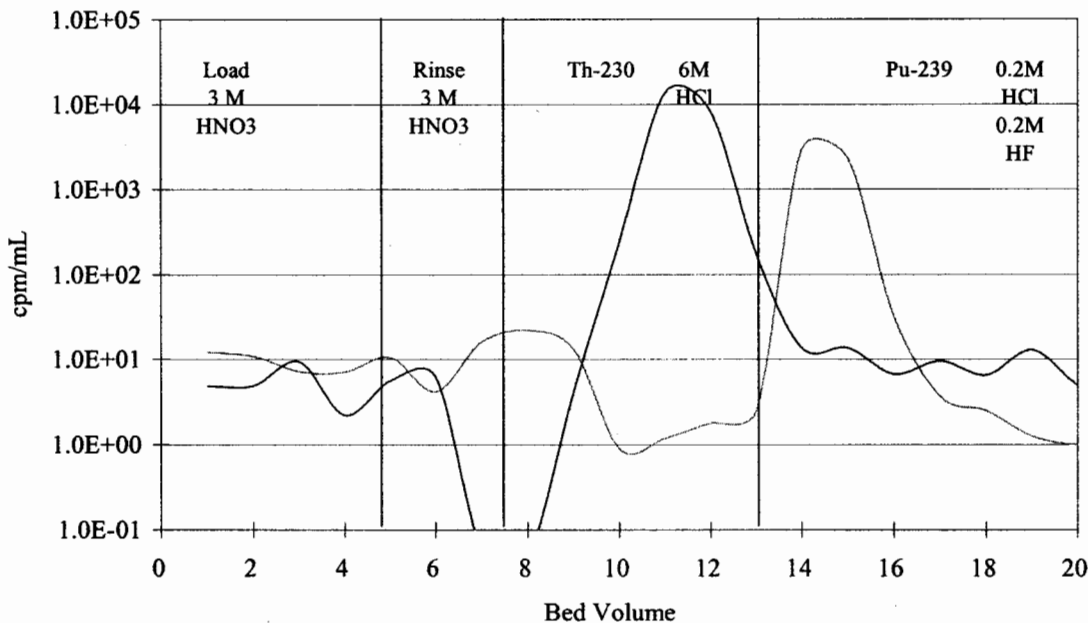
Product: Eichrom's TEVA Resin
 Lot #: TES02166

Eichrom's TEVA Resin Lot # TES02166 has been manufactured according to Eichrom's standard operating procedures. This lot has been tested in accordance with Eichrom's quality assurance policy and procedures. This lot of product meets all Eichrom quality specifications.

ANALYSIS RESULTS

<u>Test Value</u>	<u>Specification</u>	<u>Result</u>
Appearance	White beads	Pass
Distribution Ratio, 3.0 N nitric acid	>200	451
% ²³⁰ Th stripped in 6M HCl		
Least acceptable mean	93.0	99.7
Max. standard deviation	2.5	0.2
% ²³⁰ Th stripped in 0.02M HCl + 0.02M HF		
Least acceptable mean	2.0	0.3
Max. standard deviation	1.5	0.1
% ²³⁹ Pu stripped in 0.02M HCl + 0.02M HF		
Least acceptable mean	90.0	98.3
Max. standard deviation	2.5	0.7
% ²³⁹ Pu stripped in 6M HCl		
Least acceptable mean	1.0	0.1
Max. standard deviation	0.5	0.0

TEVA Resin Elution Curve



Joel Williamson
 Joel Williamson
 Senior Quality Control Chemist

3/15/06

Prepared: March 15, 2006